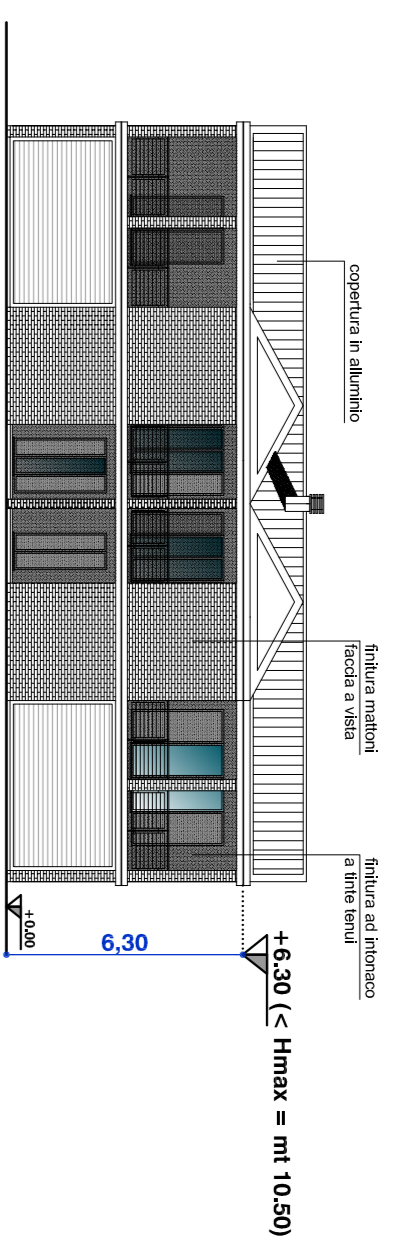
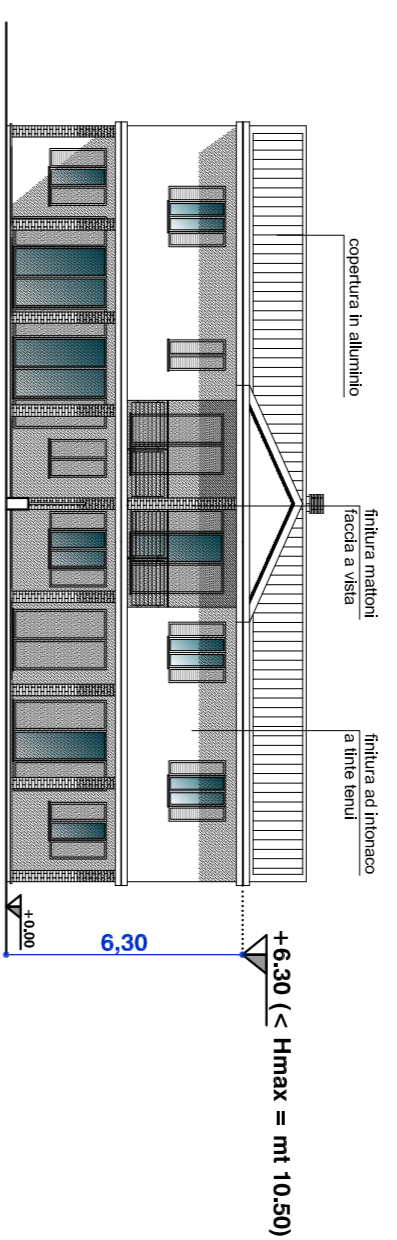


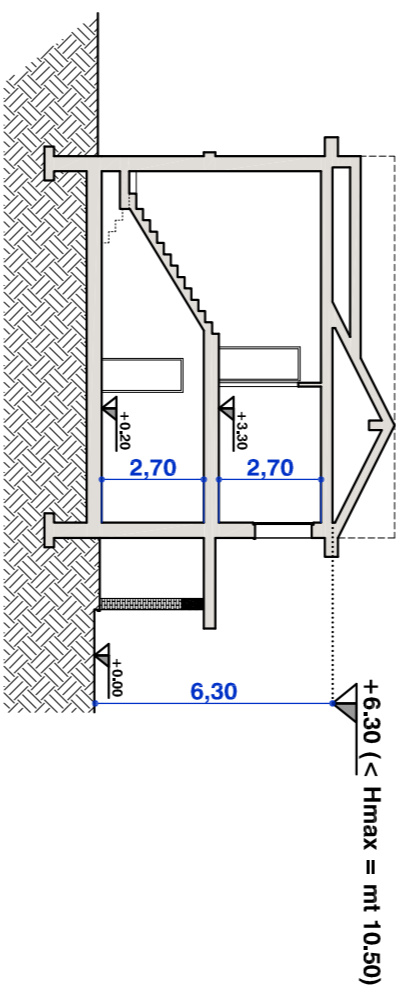
TIPOLOGIA BIFAMILIARE
Scala 1:200



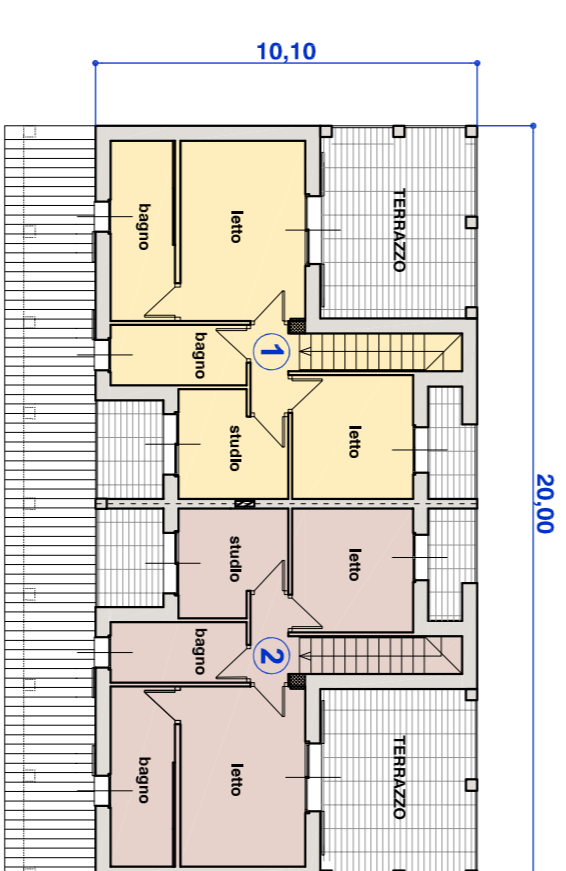
PROSPETTO SUL RETRO



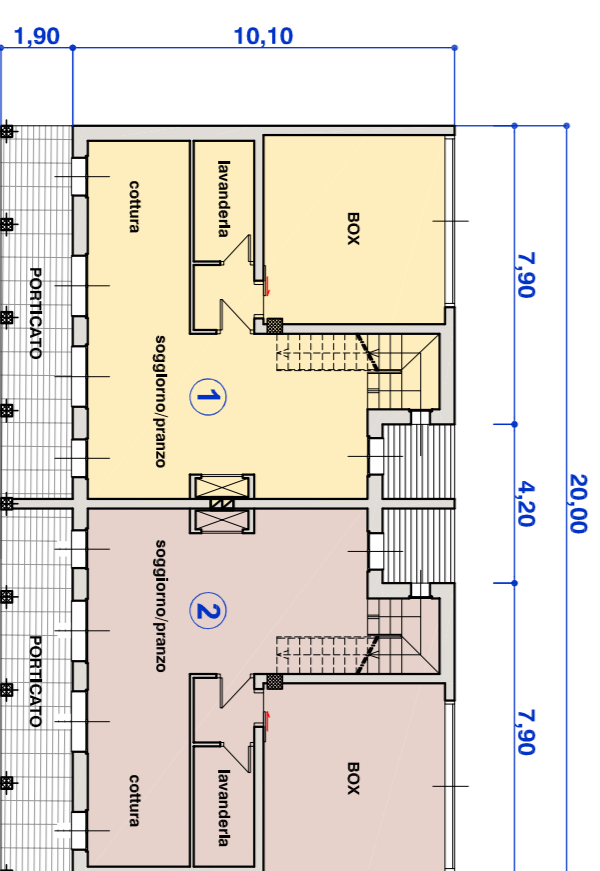
PROSPETTO PRINCIPALE



SEZIONE TIPO



PIANTA PIANO PRIMO

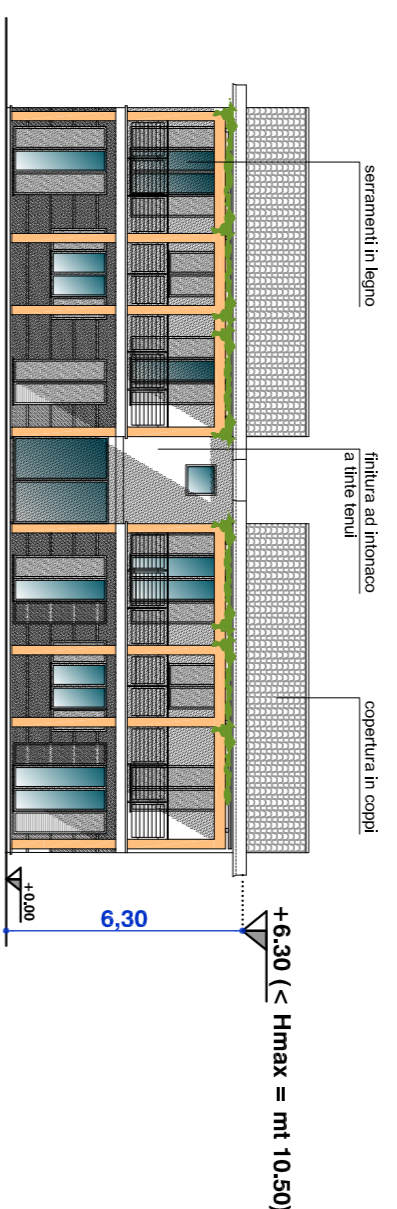


PIANTA PIANO TERRA

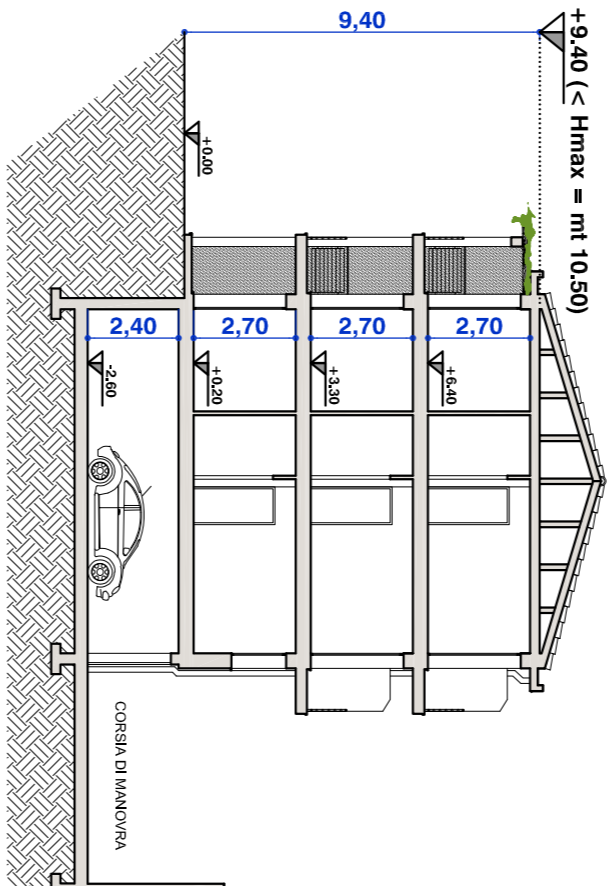
TIPOLOGIA PALAZZINA
Scala 1:200



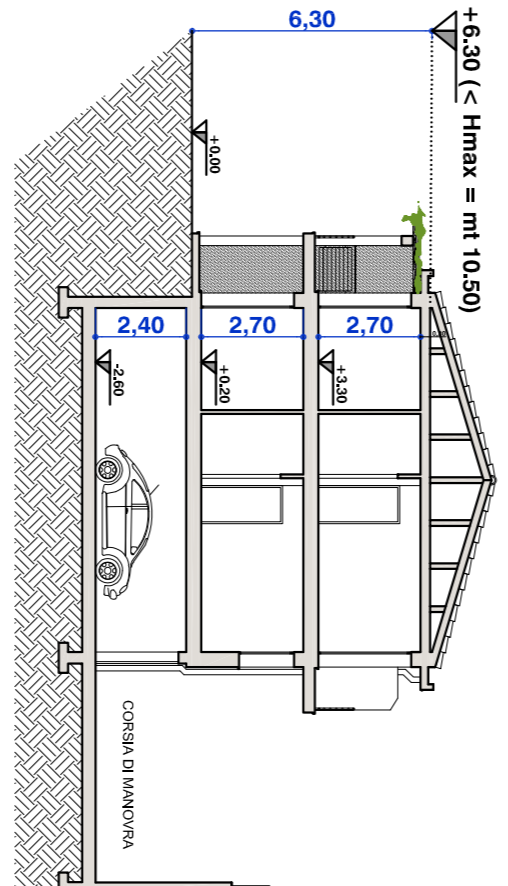
PROSPETTO PRINCIPALE TIPO (3 P. F.T.)



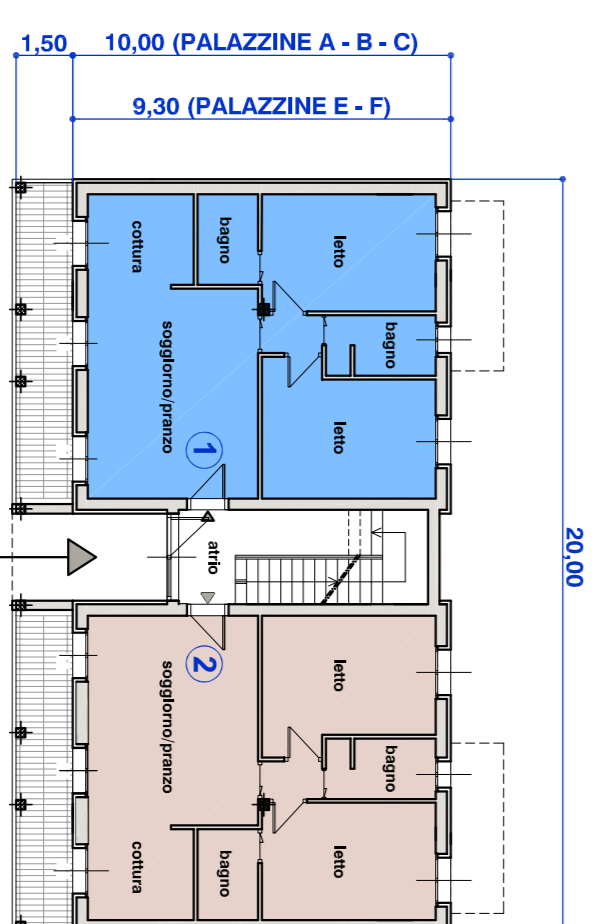
PROSPETTO PRINCIPALE TIPO (2 P. F.T.)



SEZIONE TIPO PALAZZINA 3 P.F.T.



SEZIONE TIPO PALAZZINA 2 P.F.T.



PIANTA PIANO TIPO

PLANIMETRIA DI PROGETTO

Scala 1:500



PAGANI	Studio Architetto Paolo Pagani, Scalabrini 7, 29121 Piacenza Tel. 0523 389795 P.IVA 00401440394 C.F. PGN FLA 48R31 G835H P.BC paolo.pagani@archiworkspace.it mail arch.paolo.pagani@gmail.com Web architettopaolopagani.com
Progetto	PROPOSTA DI ACCORDO OPERATIVO AMBITO MAMMAGO - AN2 LOC. S. NICOLÒ DI ROTTORFENO
Oggetto	TIPOLOGIE EDILIZIE DI PROGETTO PLANIMETRIA GENERALE, PIANTE E PROSPETTI
Protezione	Arch. Paolo Pagani Firma o timbro
Invola	3
Committente	Immobiliare Il Vecchio Pozzo S.a.s.
Data	REV. Novembre 2023
Scala	1:200 / 1:500